

SAFETY:

The health and safety of our staff and clients is always our top priority. CG Schmidt has taken steps to help prevent the spread of COVID-19 throughout our jobsite and the buildings we are working in. We have met with our subcontractors to inform them of the changes that we have made on site, including a 100% glove policy, mask policy (when working within six feet of other people). Hand sanitizer stations are also installed around the site for everyone's use.

WHAT YOU MAY NOTICE ON SITE IN THE NEXT WEEK:

PLE

- Finishing touches

Site

- Continued Amphitheater concrete work

ASA Clark Middle School

- Finishing touches

Pewaukee High School

- Finishing touches

PROGRESS SINCE LAST UPDATE:

PLE RENOVATION

- **4K Enhancements** – Finished building the enhancement pieces
- **Punchlist** – Continued punchlist work

ASA Clark Remodel

- **Flooring** – Began main stairwell treads
- **Punchlist** – Continued punchlist work

INNOVATION ADDITION

- **Punchlist** – Continued punchlist work

Pewaukee High School

- **Carpentry** – Finished installing column wraps
- **Carpentry** – Finished installing learning stairs in main lobby
- **Flooring** – Continued lobby flooring
- **Punchlist** – Continued punchlist work

GOALS NEXT 2 WEEKS:

PLE

- RENOVATION

- **Punchlist** – Continue punchlist items

ASA

- 6th GRADE ADDITION

- INNOVATION ADDITION

- **Punchlist** – Continue punchlist items

Pewaukee High School

- **Concrete** – Continue the site amphitheater
- **Exterior Metal Panel** – Finish exterior metal panel
- **Punchlist** – Continue punchlists
- **Landscaping** – Finish final landscaping

P CONSTRUCTION UPDATE

PEWAUKEE
SCHOOL DISTRICT

September 11th, 2020



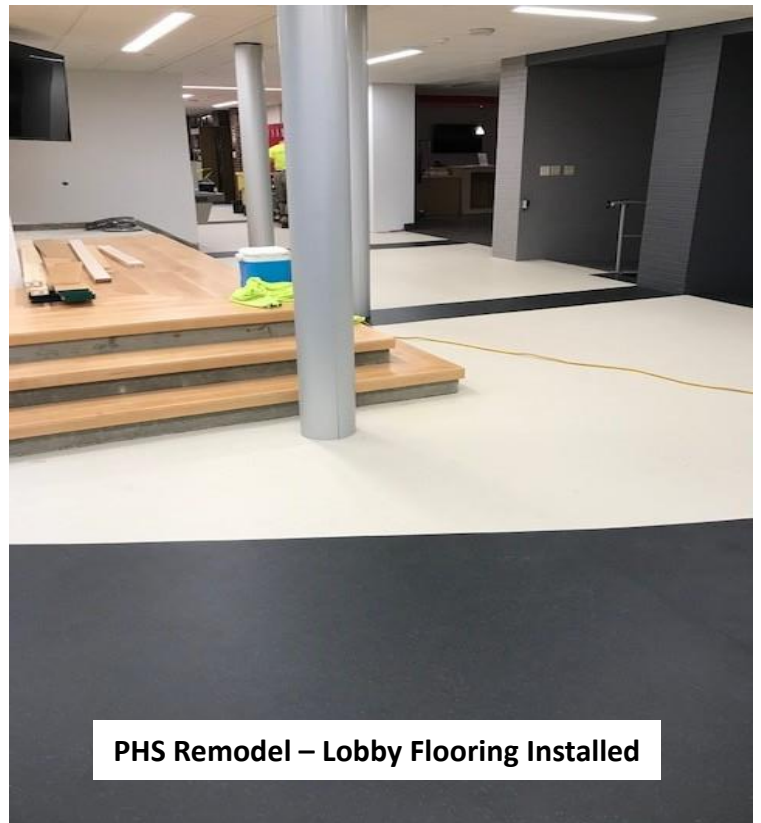
Site – First Set Of Stairs Poured



PHS Remodel – Learning Stairs Installed



PHS Remodel – Front Entrance Metal Paneling Installed



PHS Remodel – Lobby Flooring Installed