

# **P** CONSTRUCTION UPDATE

PEWAUKEE  
SCHOOL DISTRICT

July 24<sup>th</sup>, 2020

## **SAFETY:**

The health and safety of our staff and clients is always our top priority. CG Schmidt has taken steps to help prevent the spread of COVID-19 throughout our jobsite and the buildings we are working in. We have met with our subcontractors to inform them of the changes that we have made on site, including a 100% glove policy, mask policy (when working within six feet of other people). Hand sanitizer stations are also installed around the site for everyone's use.

## **WHAT YOU MAY NOTICE ON SITE IN THE NEXT WEEK:**

### PLE

- Finish installing flooring in the West corridor

### Site

- Begin grading the site stair

### ASA

- Frame the corridor connector between ASA and the High School

### Pewaukee High School

- Continue drywalling the 1<sup>st</sup> floor administrative area

## **PROGRESS SINCE LAST UPDATE:**

### PLE RENOVATION

- **Flooring** – Began installing flooring in the West corridor
- **Fire Protection** – Continued fire protection installation
- **Flooring** – Installed flooring in the art and music rooms
- **Punchlist** – Began punch list in the 4k area

### ASA Clark Remodel

- **Electrical** – Began running electrical components in the mechanical room
- **HVAC** – Air handling units were installed in the mechanical room
- **Framing** – Began framing soffits on the 2<sup>nd</sup> floor Resource area

### INNOVATION ADDITION

- **HVAC** – Continued installing ductwork
- **Glass** – Glass for the skylight is installed
- **Masonry** – Began courtyard veneer

### Pewaukee High School

- **Skylight** – Finished framing below the skylight
- **Skylight** – Began painting under skylight
- **Electrical** – Continued electrical rough in the administrative area

## **GOALS NEXT 2 WEEKS:**

### PLE

#### - RENOVATION

- **Punchlist** – Begin punch list items in a good portion of the school
- **Ceilings** – Begin installing the ceilings in the Resource area
- **Framing** – Finishing framing the Resource area
- **Flooring** – Begin epoxy flooring in the Makers Space

### ASA

#### - 6<sup>th</sup> GRADE ADDITION

#### - INNOVATION ADDITION

- **Drywall** – Begin drywalling 2<sup>nd</sup> floor soffits
- **Drywall** – Finish first floor drywall in the new addition
- **Masonry** – Finish ASA courtyard veneer

### Pewaukee High School

- **Iron Work** – Install lobby stairwell
- **Framing** – Finish framing 2<sup>nd</sup> Floor Learning Commons
- **Drywall** – Finish drywalling 2<sup>nd</sup> floor learning commons

# P CONSTRUCTION UPDATE

PEWAUKEE  
SCHOOL DISTRICT

July 24<sup>th</sup>, 2020



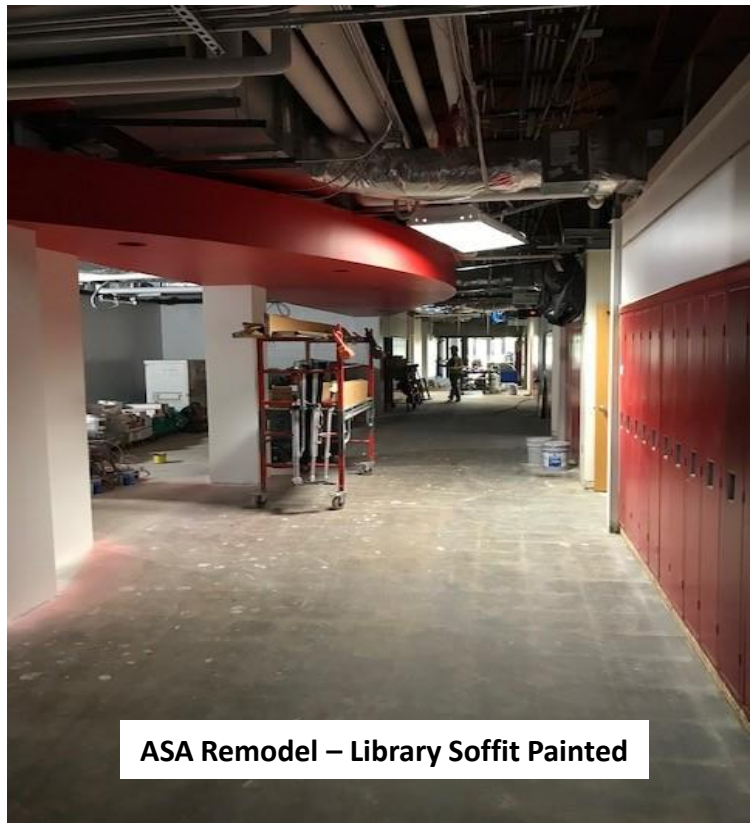
PLE Renovation – Carpet Installed In The Music Room



PLE Renovation – Staff Lounge New Lights, Ceiling Grid, And Paint



PLE Renovation – West Corridor Carpet Installed



ASA Remodel – Library Soffit Painted

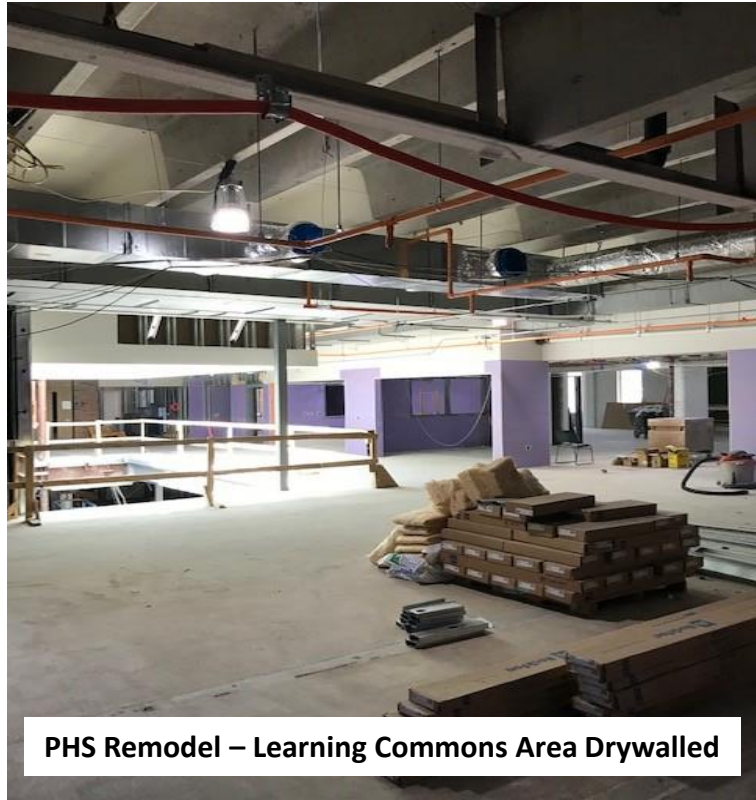
# P CONSTRUCTION UPDATE

PEWAUKEE  
SCHOOL DISTRICT

July 24<sup>th</sup>, 2020



ASA Remodel – Reception Area Painted and Ceiling Grid Installed



PHS Remodel – Learning Commons Area Drywalled



PHS Remodel – Skylight Glass Installed



Site – Student Lot Paved