

P CONSTRUCTION UPDATE

PEWAUKEE
SCHOOL DISTRICT

July 2nd, 2020

SAFETY:

The health and safety of our staff and clients is always our top priority. CG Schmidt has taken steps to help prevent the spread of COVID-19 throughout our jobsite and the buildings we are working in. We have met with our subcontractors to inform them of the changes that we have made on site, including a 100% glove policy, mask policy (when working within six feet of other people). Hand sanitizer stations are also installed around the site for everyone's use.

WHAT YOU MAY NOTICE ON SITE IN THE NEXT WEEK:

PLE

- Begin installing structural components for the canopy's in the courtyard

Site

- Loop road will be paved

ASA

- Install windows for the curtain wall in the new addition

Pewaukee High School

- Finish installing skylight over new stairwell

PROGRESS SINCE LAST UPDATE:

PLE RENOVATION

- **Drywall** – Finished installing ceiling clouds in music and art rooms
- **Fire Protection** – Continued sprinkler installation
- **Masonry** – Finished masonry walls in 4K area
- **Paint** – Began painting the 2nd grade classrooms

ASA Clark Remodel

- **HVAC** – Continued installing ductwork
- **Drywall** – Continued drywall installation in Library
- **Paint** – Began painting the Severy
- **Ceiling Grid** – Continued installing ceiling grid in Band and Choir room
- INNOVATION ADDITION
- **HVAC** – Continued installing ductwork
- **Plumbing** – Poured in-floor plumbing
- **Framing** – Continued framing in 1st floor STEAM and Art lab
- **Stairs** – Poured stairs in the Forum space

Pewaukee High School

- **Skylight** – Precast was pulled off and rough in has begun
- **Iron Work** – Structural and roof steel is being installed for Classroom H239
- **Masonry** – Continued reception block walls

GOALS NEXT 2 WEEKS:

PLE

- RENOVATION

- **Renovation** – Be framed up with canopy's in the courtyard
- **Punchlist** – Be ready for a Punchlist in the 1st and 2nd grade west wing
- **Demolition** – Substantially complete with demo
- **Masonry** – Finish miscellaneous masonry items

ASA

- 6th GRADE ADDITION

- INNOVATION ADDITION

- **HVAC** – Finish library HVAC duct
- **MEP** – Finish overhead rough-in
- **Framing** – Start framing in the new addition
- **Drywall** – Finish drywalling in the STEAM rooms

Pewaukee High School

- **Elevator** – Finish installing the elevator
- **Demolition** – Substantially complete with demo
- **Skylight** – Finish installing skylight
- **Masonry** – Finish installing block walls
- **Paving** – Finish paving main parking lot

P CONSTRUCTION UPDATE

PEWAUKEE
SCHOOL DISTRICT

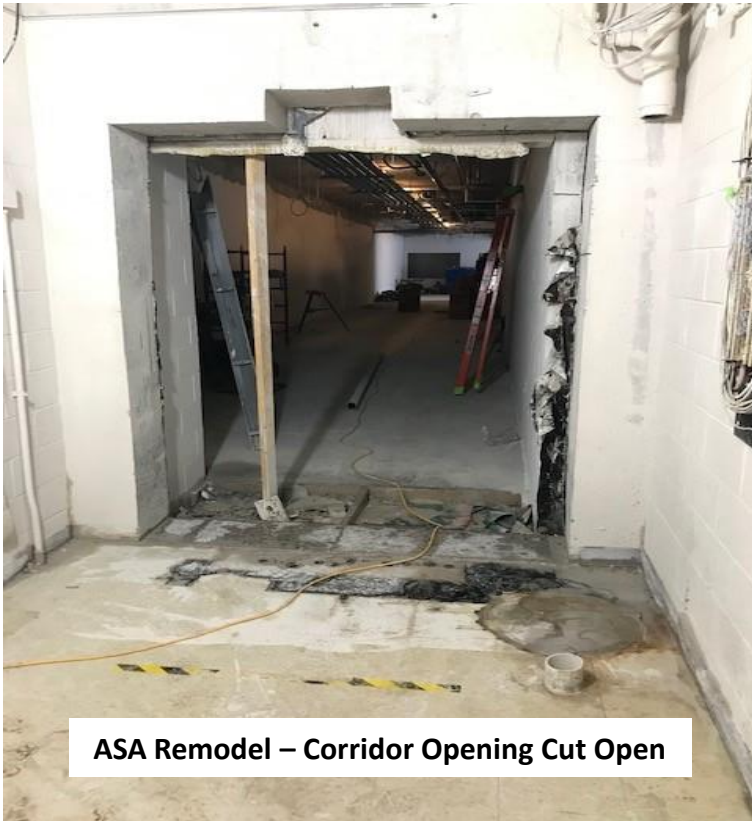
July 2nd, 2020



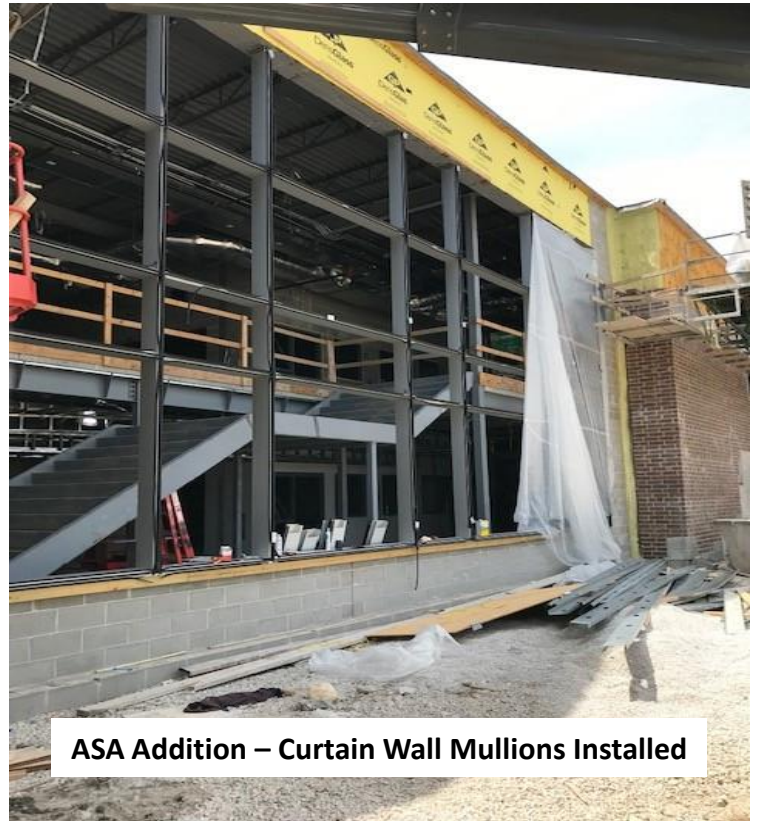
PLE Renovation – 2nd Grade Classrooms Painted



PHS – Skylight Opening Cut In



ASA Remodel – Corridor Opening Cut Open

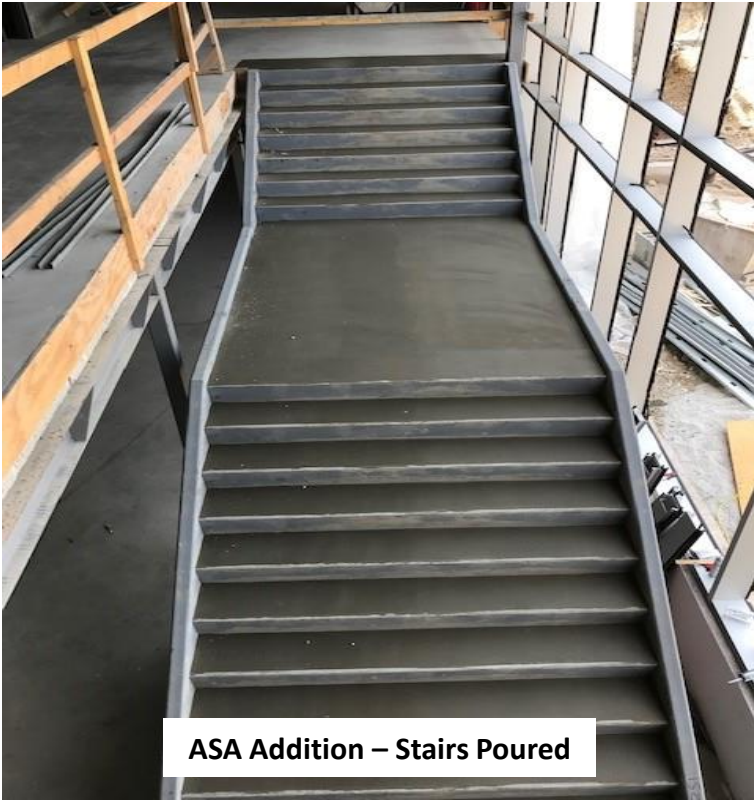


ASA Addition – Curtain Wall Mullions Installed

P CONSTRUCTION UPDATE

PEWAUKEE
SCHOOL DISTRICT

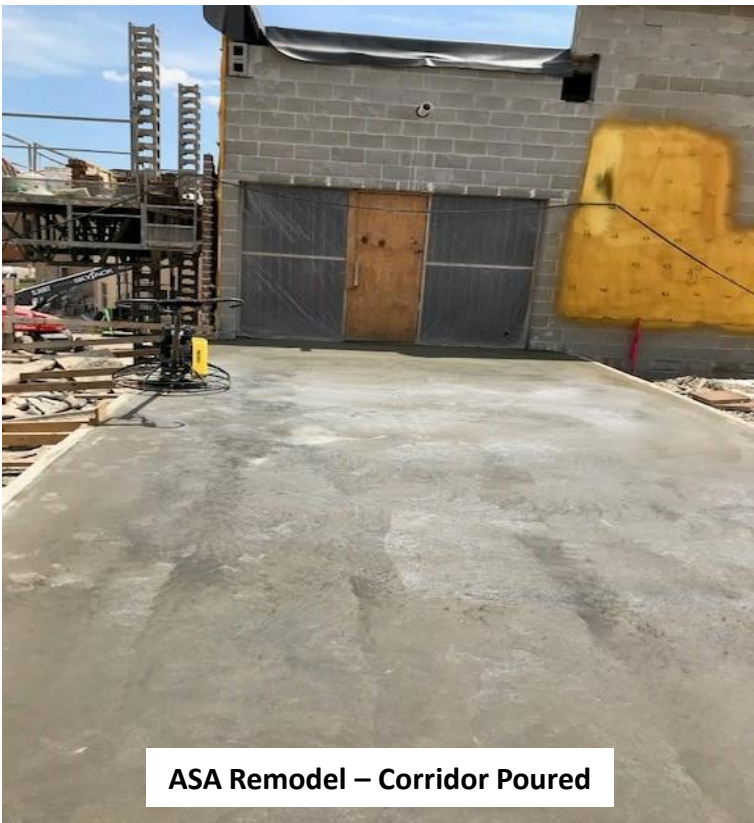
July 2nd, 2020



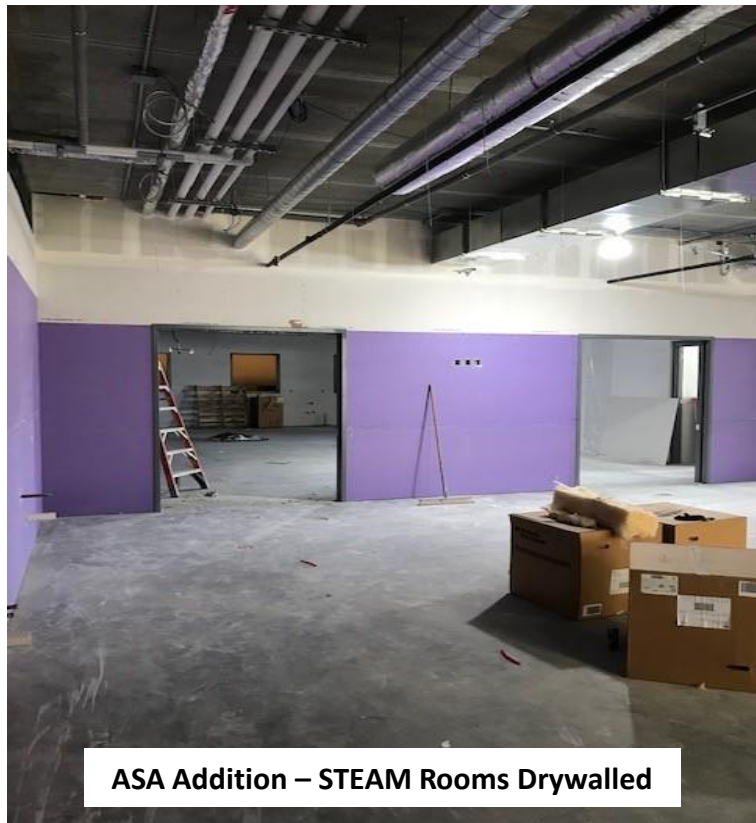
ASA Addition – Stairs Poured



Innovations – Classroom Roof Steel Installed



ASA Remodel – Corridor Poured



ASA Addition – STEAM Rooms Drywalled